

ERLY Installation Guide

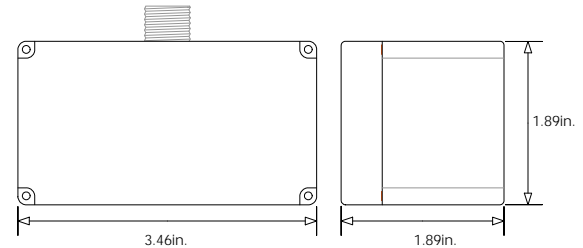
This guide covers models ERLY-120/277 and ERLY-120/347.



NOTE: ELECTRICAL SHOCK HAZARD; ALL MODELS OF THE ERLY USE HIGH VOLTAGE AND SHOULD ONLY BE INSTALLED BY A QUALIFIED INSTALLER OR ELECTRICIAN. FOLLOW ALL APPLICABLE ELECTRICAL CODES IN THE COUNTRY OF INSTALLATION.

Mounting the ERLY

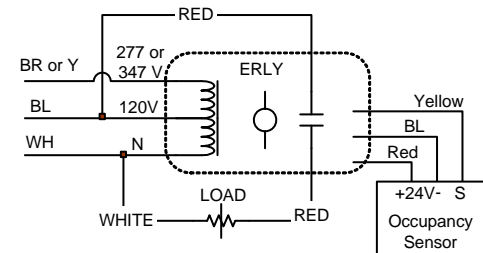
The ERLY is mounted to the exterior of an electrical junction box or panel with a 1/2" threaded nipple.



Wiring the ERLY:

Power to the controller is connected between the White (Neutral) and the Black (120V). Optionally, based on model number, commercial voltages are applied between the White (Neutral) and the Brown (277V) or Yellow(347V). (see wiring diagram).

Use only approved wire. Cap off all unused wires.



Hardware Specifications

Power Supply	120/277 VAC or 120/347 VAC
Power Consumption	2.0 W under full load
Power Output	24VAC @ 50mA
Input	Optically isolated input

Mechanical Specifications

Operating Temperature	14°F to 113°F (-10°C to 45°C)
Relative Humidity	5% to 95% RH (non-condensing)
Weight	13.5 oz (385 gms.)
Dimensions	3.5" x 1.9" x 1.9" (88 mm x 48 mm x 48 mm)
Mounting	½" nipple

Agency Listing and Compliance

UL 508 – Industrial Control Equipment, UL 5085 Part 3 – Low Voltage Transformers
UL2043 Plenum rated, suitable for air-conditioning space installations
CSA CS 22.2 - Contract # 241205